

Changing our *"WASTE LINE"*

TIPPING THE SCALES
IN FAVOUR OF WASTE DIVERSION



The County's line of waste management services today

Northumberland residents currently benefit from the following waste services:

- Weekly waste and recycling collection through Green For Life (GFL).
- Management of one active landfill and two transfer stations; monitoring and maintenance of eight closed landfills.
- Backyard composters available to residents at a reduced rate
- Waste diversion services including four household hazardous and electronic waste depots; disposal of tires, drywall, scrap metal; composting programs.
- A bulky waste voucher program for disposal of large items.

What is the Long Term Waste Management Master Plan?

In 2011, Northumberland County began creating a long-term waste management plan. This plan, now completed, is a guide that will help us better manage our local environment by keeping unnecessary waste out of our landfills —this is known as 'diversion'.

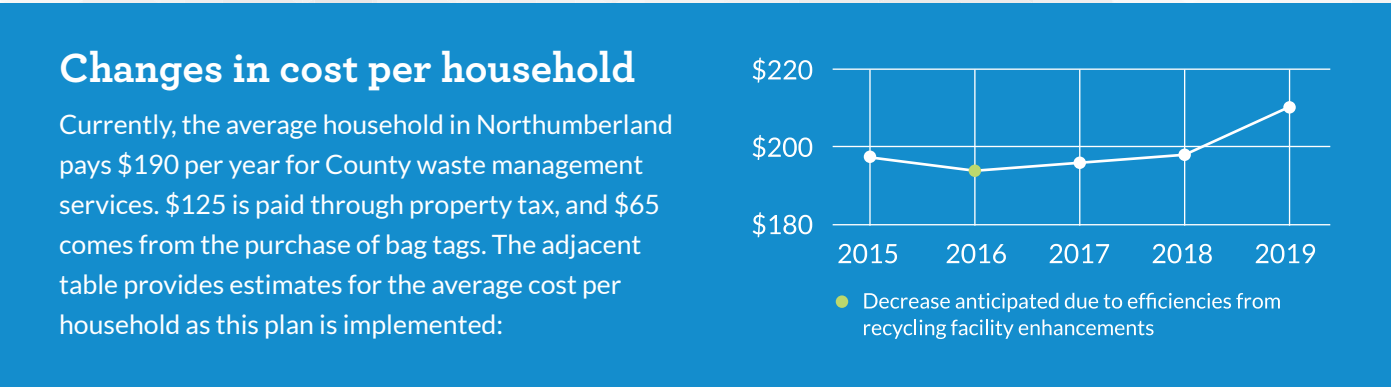


*Plan projects a 56—75% annual diversion rate depending on service roll-out and uptake

How we obtained public input

Public input has been a cornerstone of the plan development process:

- Two sets of Open Houses held throughout the County (Nov/Dec 2012; June 2013).
- Two questionnaires seeking public input (paper-based and online formats).
- Two members of the general public on the County Advisory Committee, formed in November 2011.



Changing our 'Waste Line'

Journey to a 75% Waste Diversion Rate



RECYCLING FACILITY UPGRADES:

Upgrade equipment to capture more recyclables in the sorting process.

Launches: 2014

Overall diversion: 500-1000 tonnes/year



UPGRADES TO DROP-OFF AREAS AT DEPOTS/TRANSFER STATIONS*:

Upgrade stations to allow drop-off of wider variety of materials such as dimensional lumber, shingles, electronics and textiles.

Launches: 2015

Overall diversion: 1200 tonnes/year



YARD WASTE COLLECTION/PROCESSING:

Implement seasonal collection (April-November) of yard waste and brush.

Launches: 2015

Overall diversion: 1000-2000 tonnes/year



RECYCLABLES COLLECTION AT APARTMENTS/ CONDOS*:

Begin collection from multi-residential dwellings.

Launches: 2016

Overall diversion: 600 tonnes/year



GREEN BIN (ORGANICS) COLLECTION/PROCESSING:

Collection approach and rollout strategy to be developed by 2018.

Launches: 2019

Overall diversion: 1000-5000 tonnes/year



* Phased in over three years

County's Waste Diversion Rate



TODAY: 40%
2019: 56%
LONG TERM: 75%

INTERESTING FACT:
What does 20,900 tonnes look like?

20,900 tonnes would fill:



1,608 dump trucks



2,090,000 bags of garbage



Approximately 44 bags of garbage per household, annually

Green Bin program explained

The 'Green Bin' program will mean collection of organic waste such as vegetables and fruit, coffee grinds, and paper towels. This will be turned into compost for use on farms, in gardens, in parks, etc.

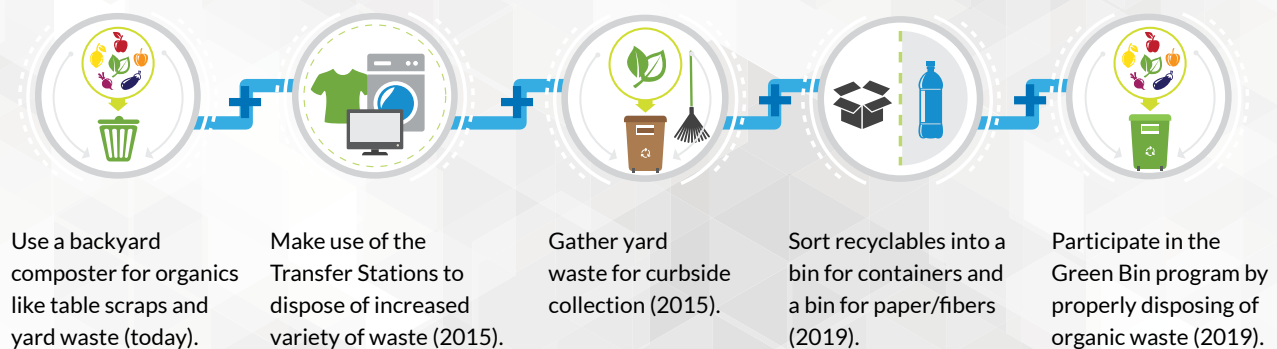
About one third of household waste is organic. This program will be an important part of the long-term plan to keep thousands of tonnes of waste from our landfills.

ROLL-OUT IS SLATED FOR 2019 SO THAT:

- The County can properly plan details related to collection contracts, facilities management, and finances.
- The overall Long Term Waste Management Master Plan is implemented in a way that is realistic, attainable and affordable for both the County and residents.

How else you can help get Northumberland to 75% diversion

This is a shared plan between the County and Northumberland residents. We all have a role to play to get to the goal of 75% diversion. To achieve success, we encourage you to do the following, as services become available:



Learn More

TRANSPORTATION AND WASTE MANAGEMENT DEPARTMENT

Northumberland County
555 Courthouse Road
Cobourg, ON K9A 5J6

Toll Free: 1-866-293-8379

Web: www.northumberlandcounty.ca/wasteplan

 @NorthRecycles  Northumberland County Waste Department